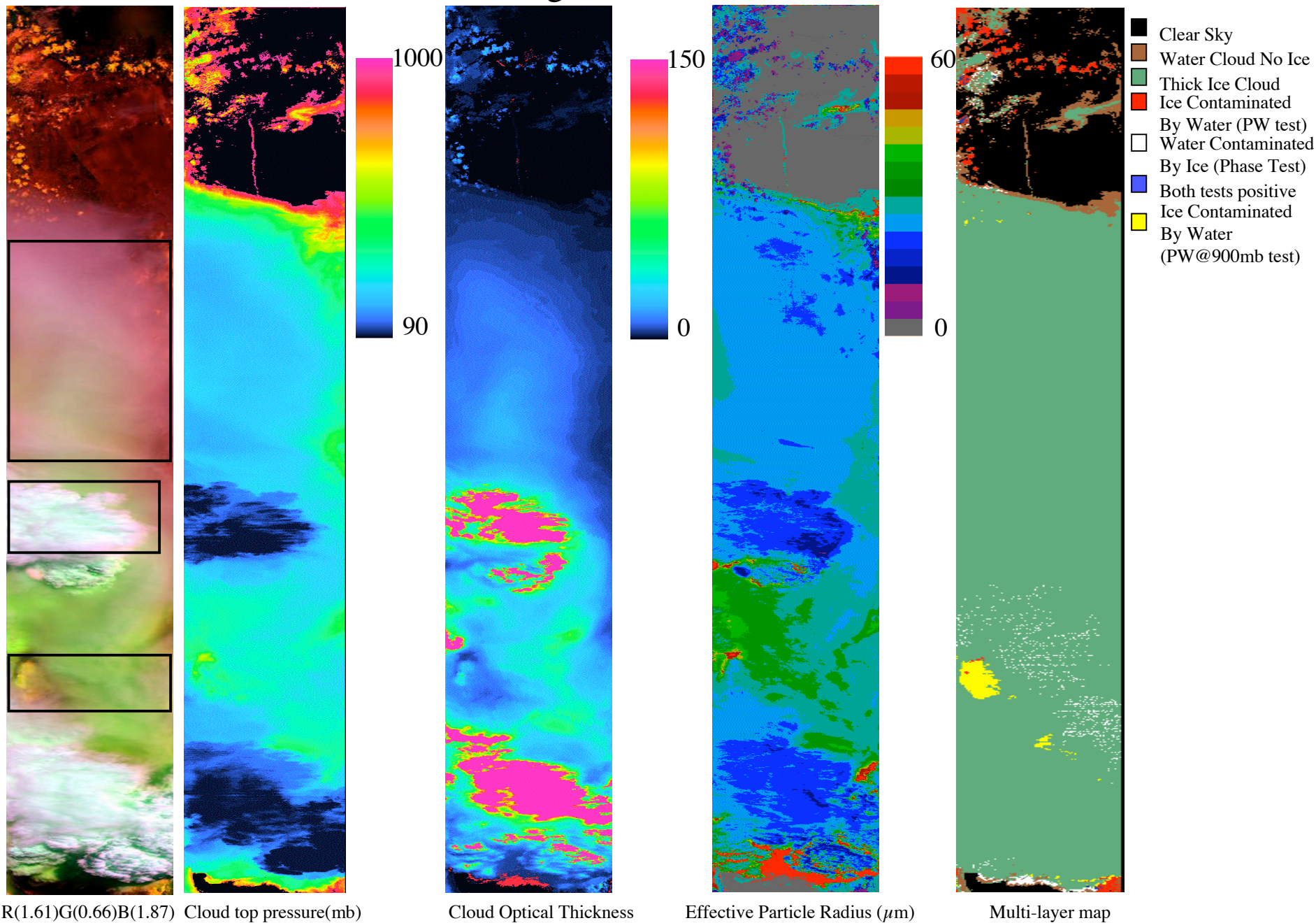


# 2002.07.23 flight 02953, track 8, full track



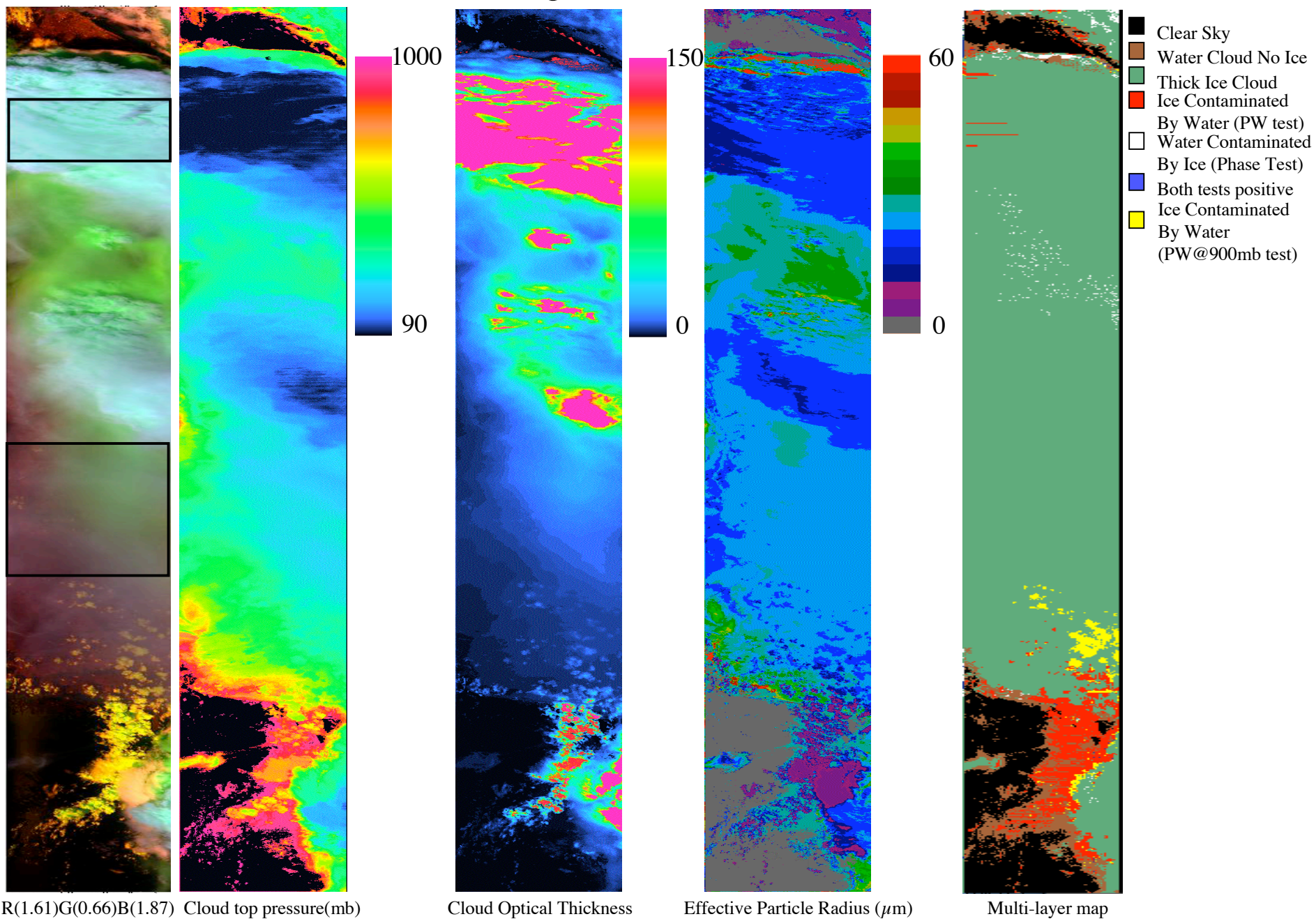
R(1.61)G(0.66)B(1.87) Cloud top pressure(mb)

Cloud Optical Thickness

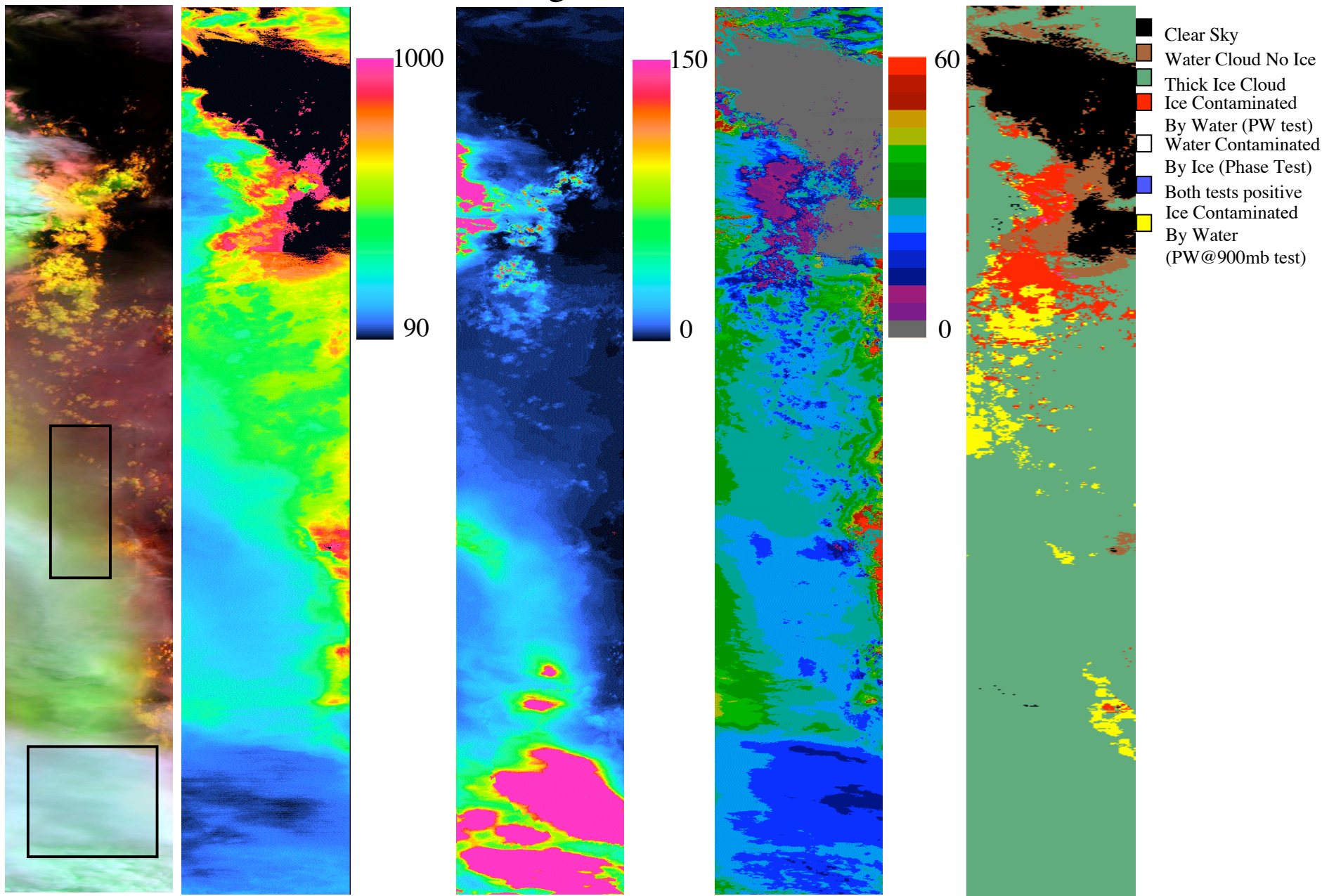
Effective Particle Radius ( $\mu\text{m}$ )

Multi-layer map

# 2002.07.23 flight 02953, track 9, full track



# 2002.07.23 flight 02953, track 10, full track



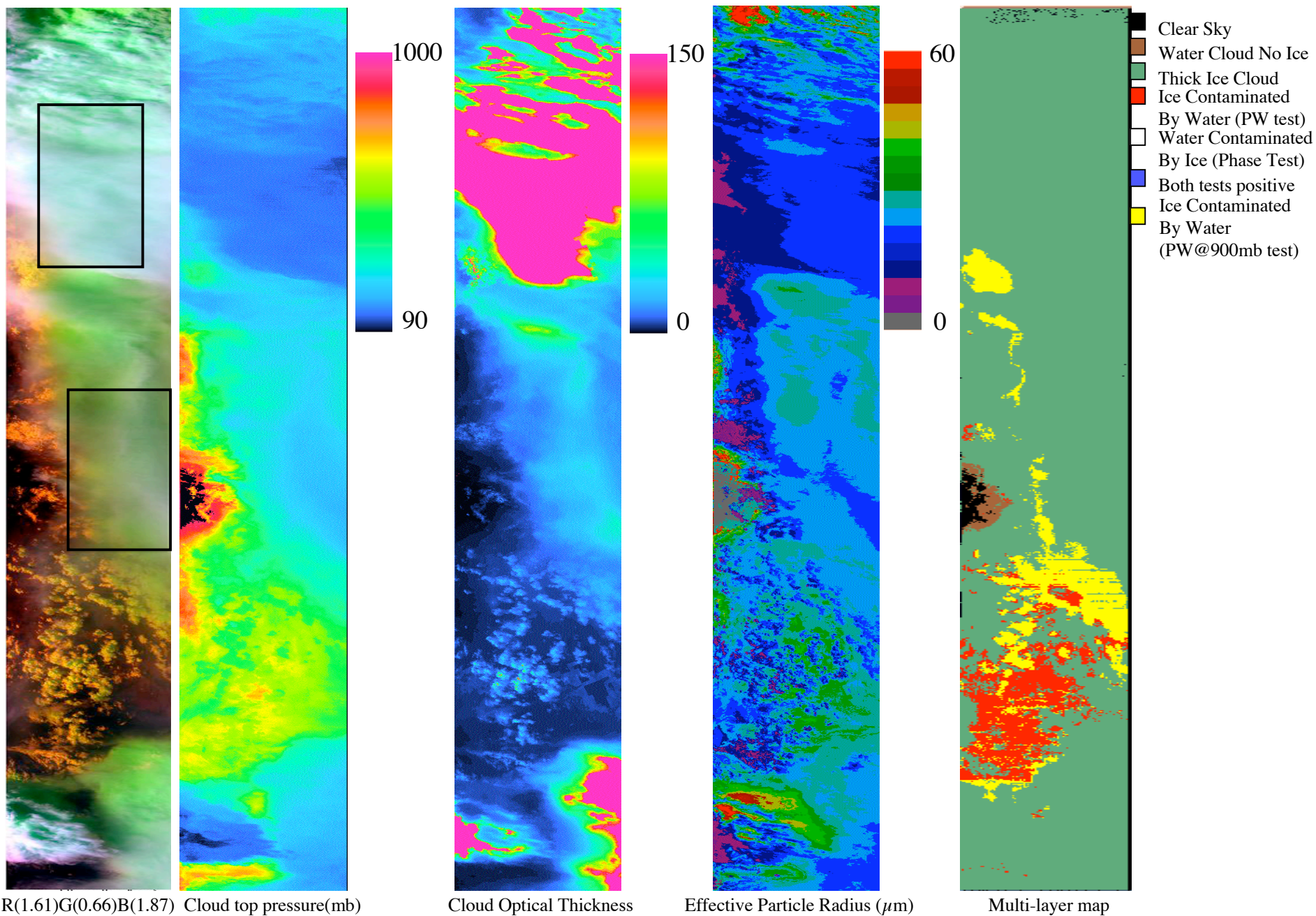
R(1.61)G(0.66)B(1.87) Cloud top pressure(mb)

Cloud Optical Thickness

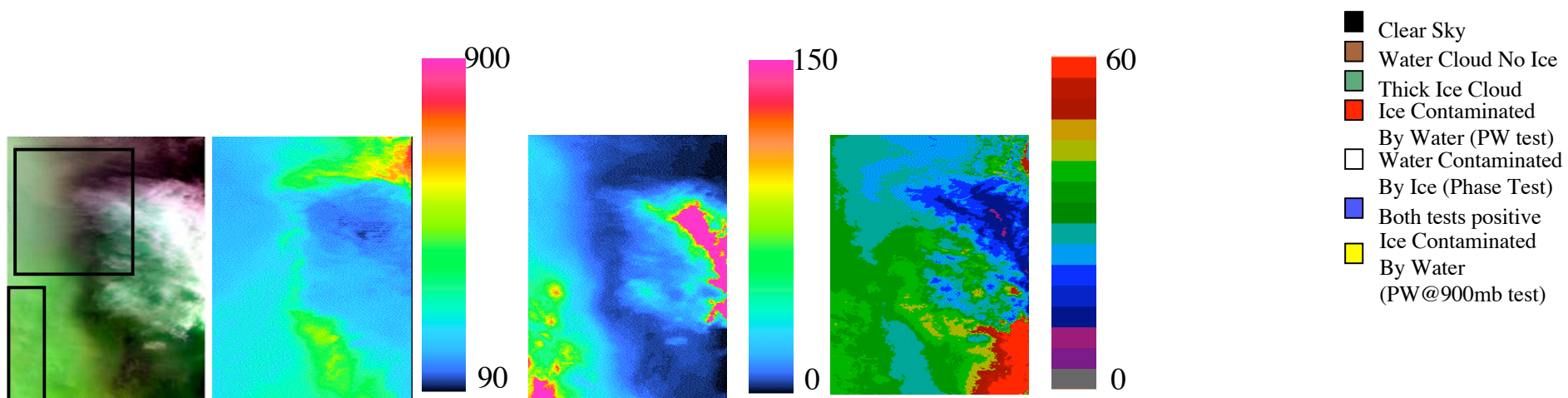
Effective Particle Radius (μm)

Multi-layer map

# 2002.07.23 flight 02953, track 11, full track



# 2002.07.23 flight 02953, track 12, full track



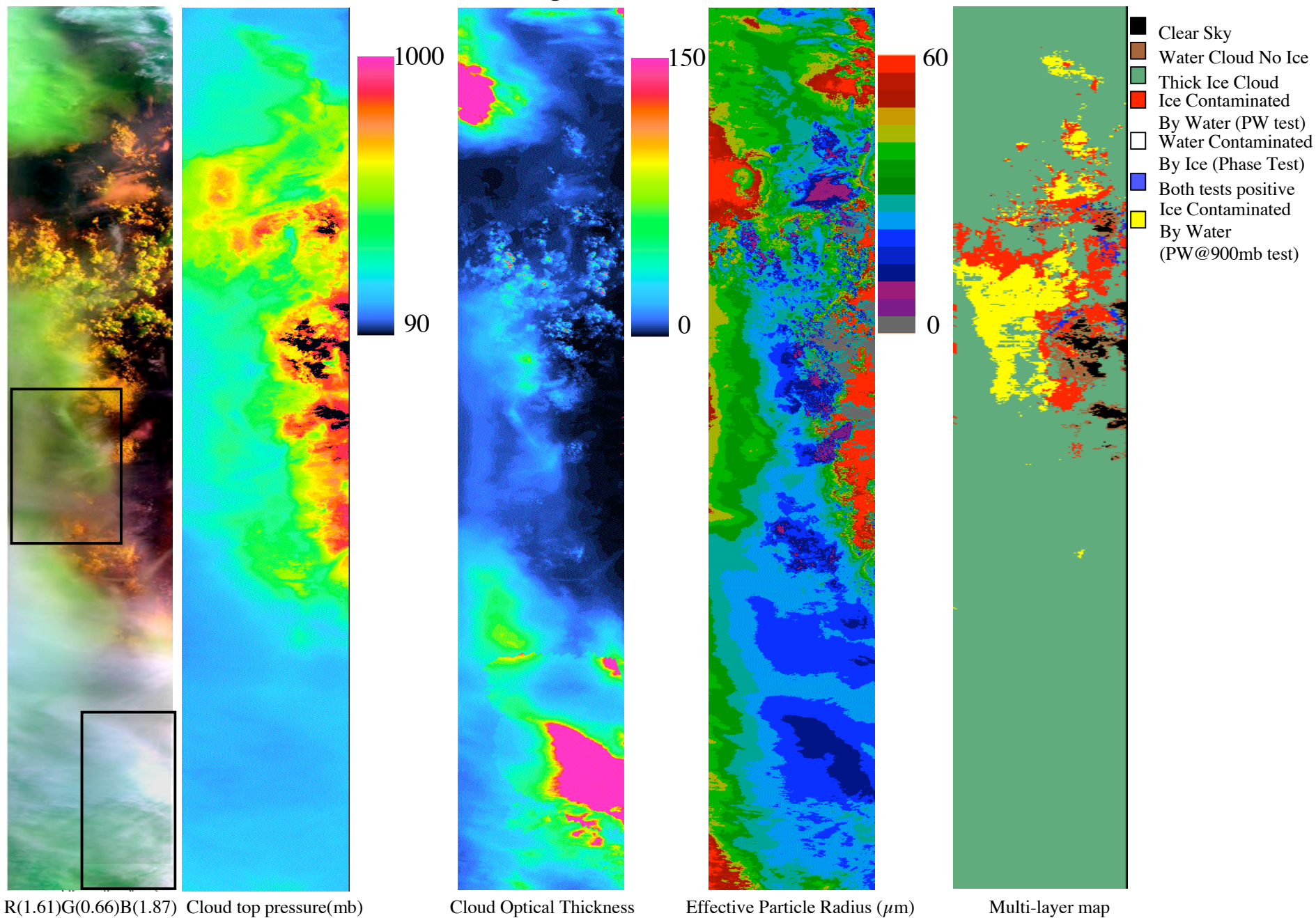
R(1.61)G(0.66)B(1.87) Cloud top pressure(mb)

Cloud Optical Thickness

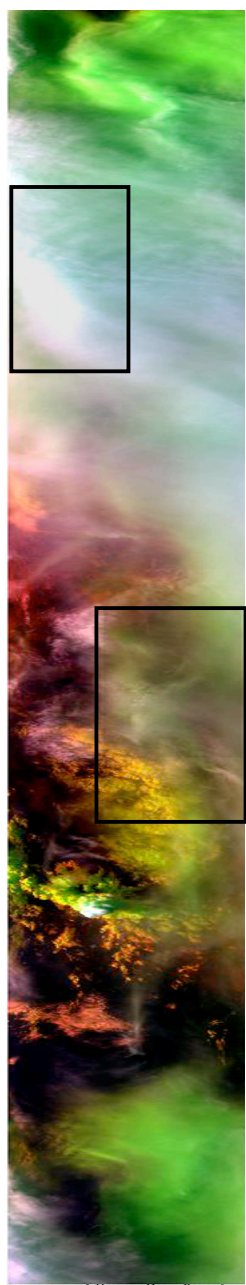
Effective Particle Radius ( $\mu\text{m}$ )

Multi-layer map

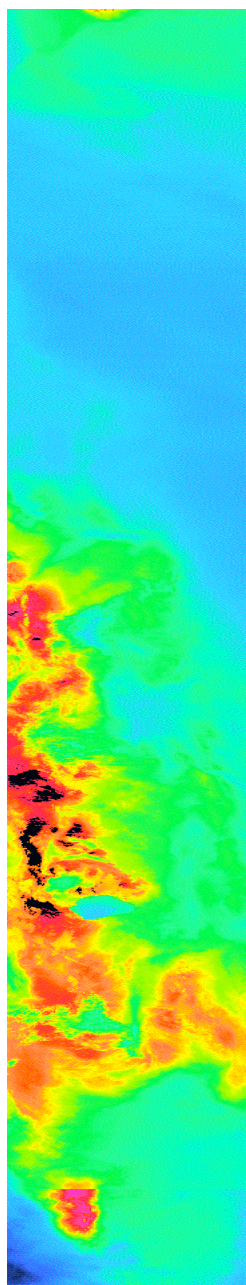
# 2002.07.23 flight 02953, track 13, full track



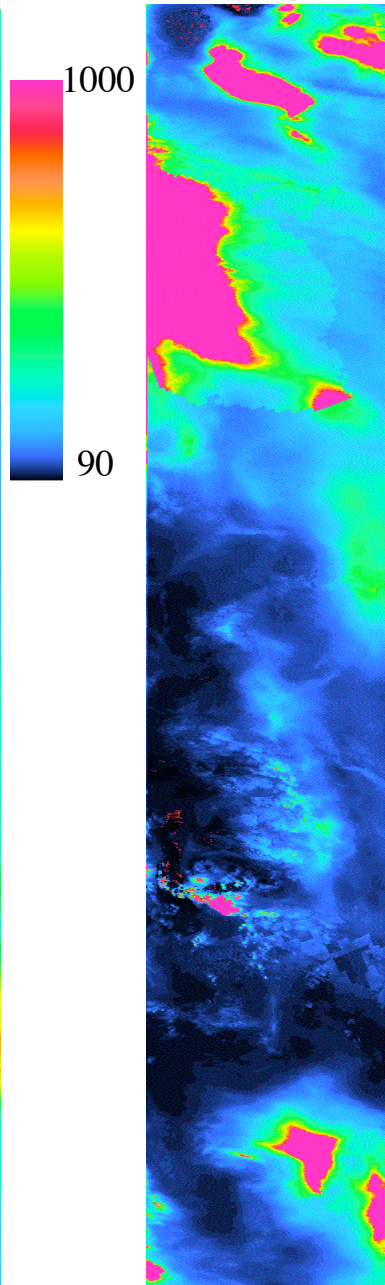
# 2002.07.23 flight 02953, track 14, full track



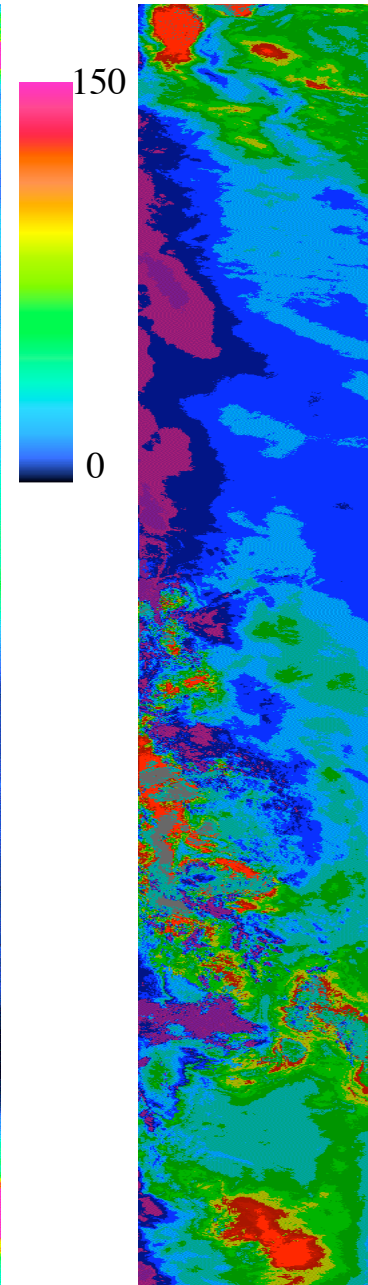
R(1.61)G(0.66)B(1.87)



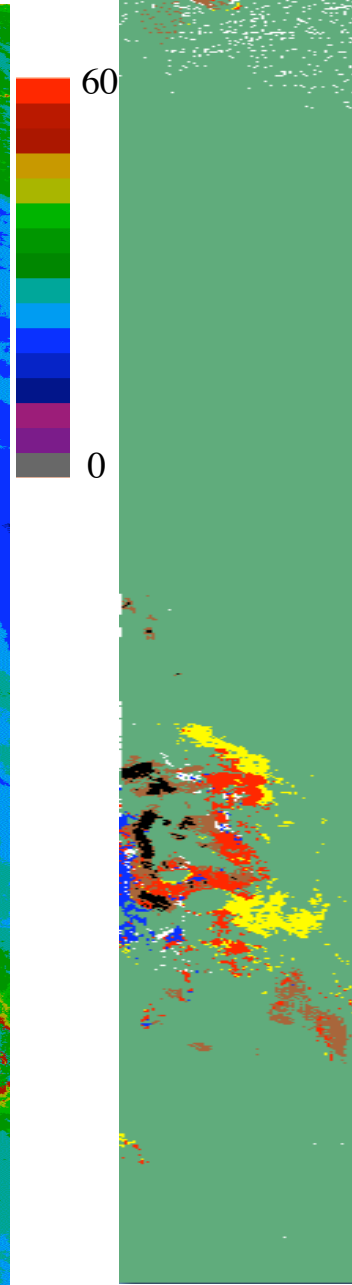
Cloud top pressure(mb)



Cloud Optical Thickness



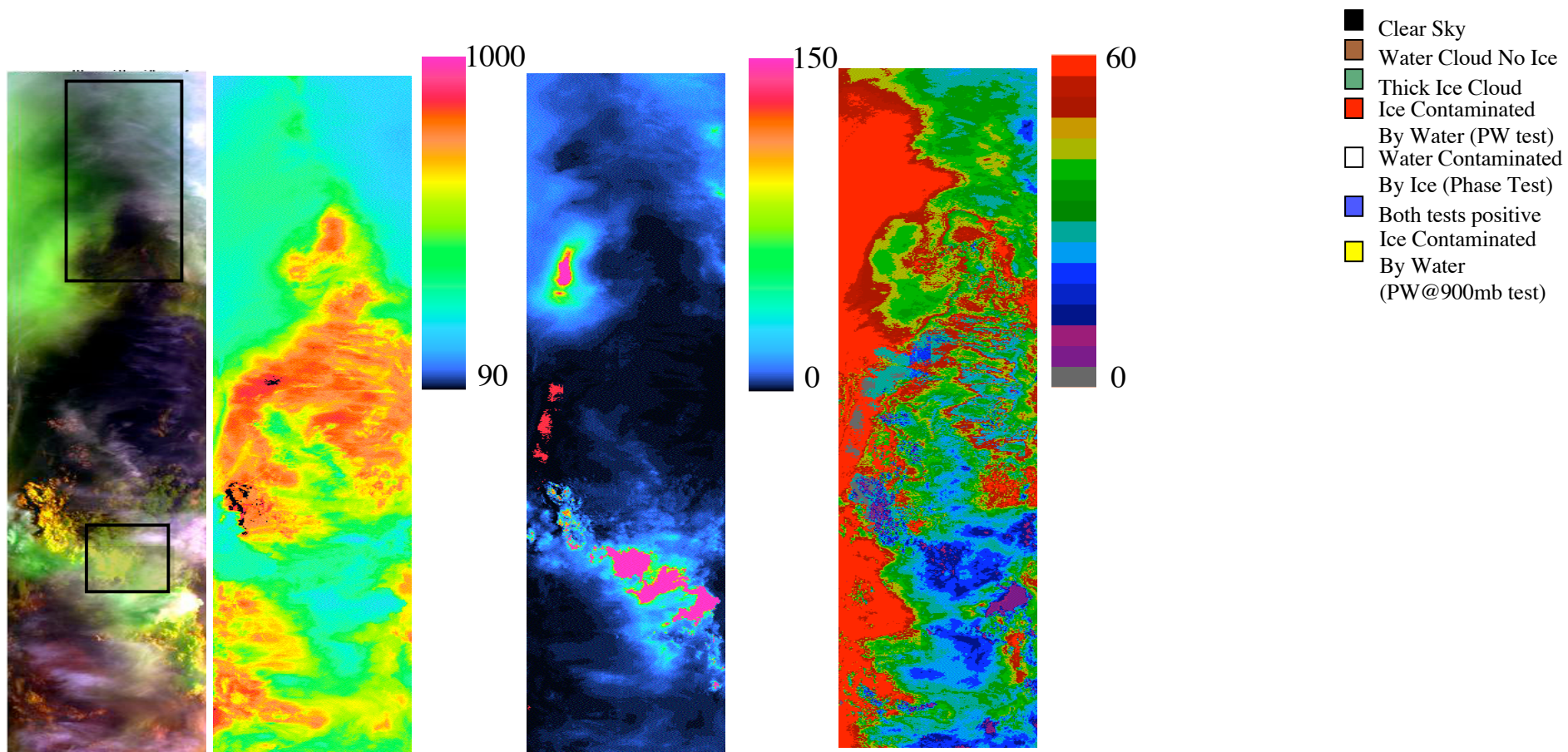
Effective Particle Radius ( $\mu\text{m}$ )



Multi-layer map

- Clear Sky
- Water Cloud No Ice
- Thick Ice Cloud
- Ice Contaminated
- By Water (PW test)
- Water Contaminated
- By Ice (Phase Test)
- Both tests positive
- Ice Contaminated
- By Water (PW@900mb test)

# 2002.07.23 flight 02953, track 15, full track



R(1.61)G(0.66)B(1.87) Cloud top pressure(mb)

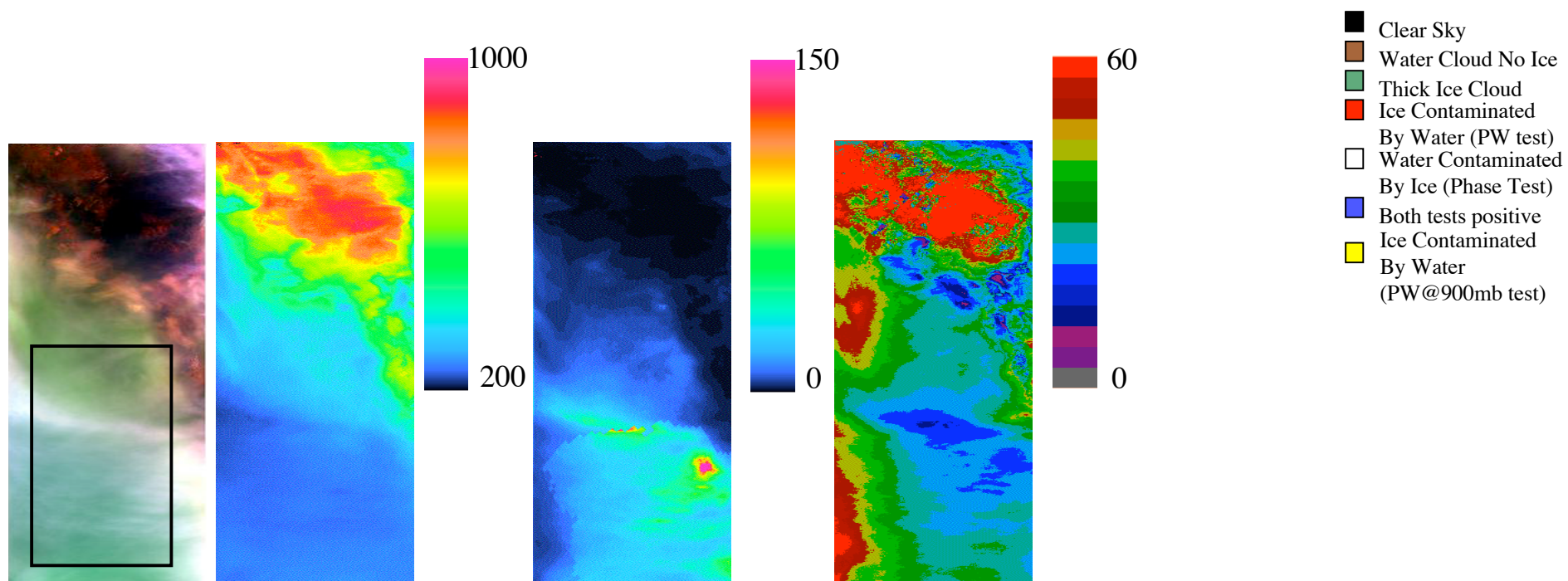
Cloud Optical Thickness

Effective Particle Radius ( $\mu\text{m}$ )

Multi-layer map



# 2002.07.23 flight 02953, track 16, full track



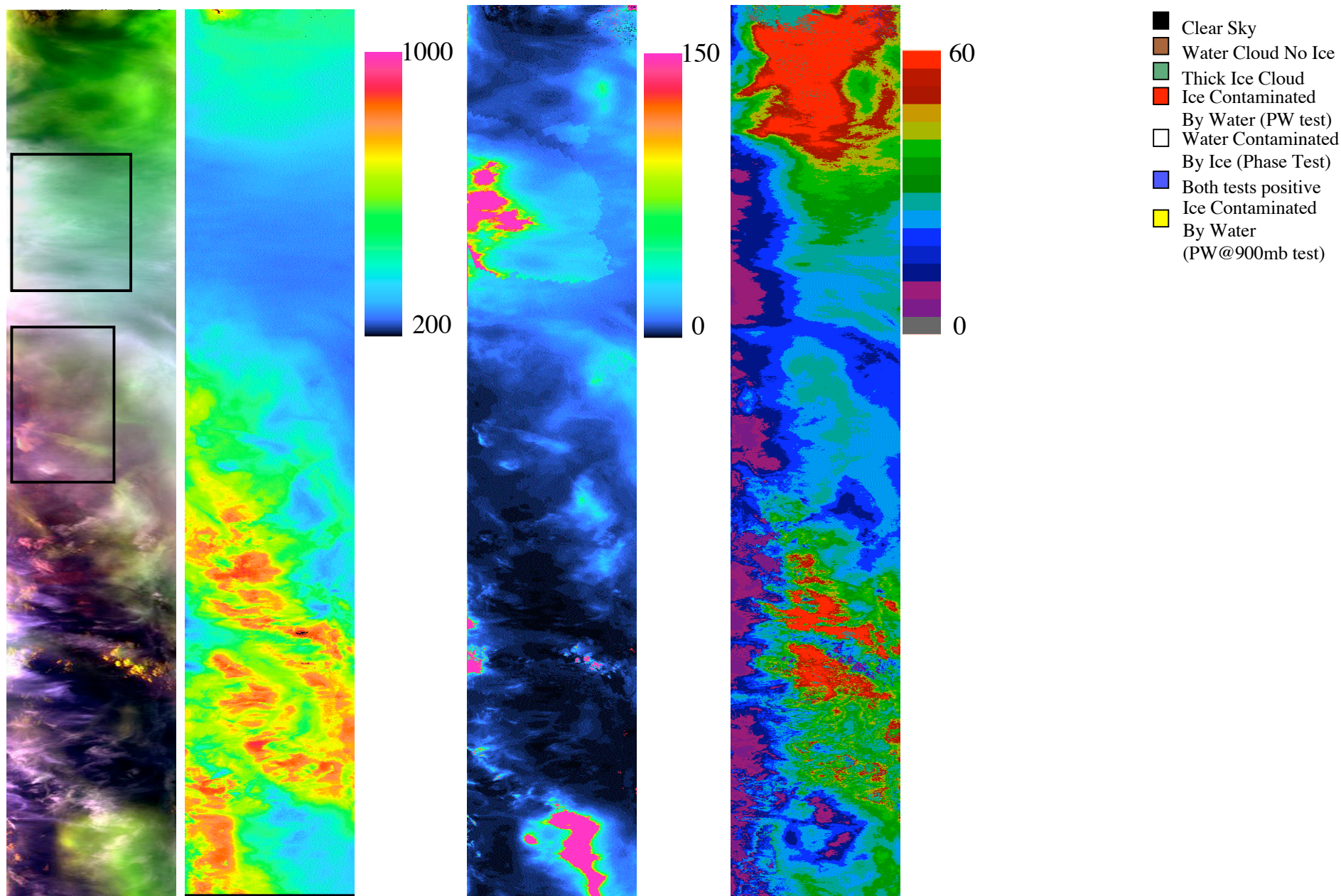
R(1.61)G(0.66)B(1.87) Cloud top pressure(mb)

Cloud Optical Thickness

Effective Particle Radius ( $\mu\text{m}$ )

Multi-layer map

# 2002.07.23 flight 02953, track 17, full track



R(1.61)G(0.66)B(1.87) Cloud top pressure(mb)

Cloud Optical Thickness

Effective Particle Radius ( $\mu\text{m}$ )

Multi-layer map