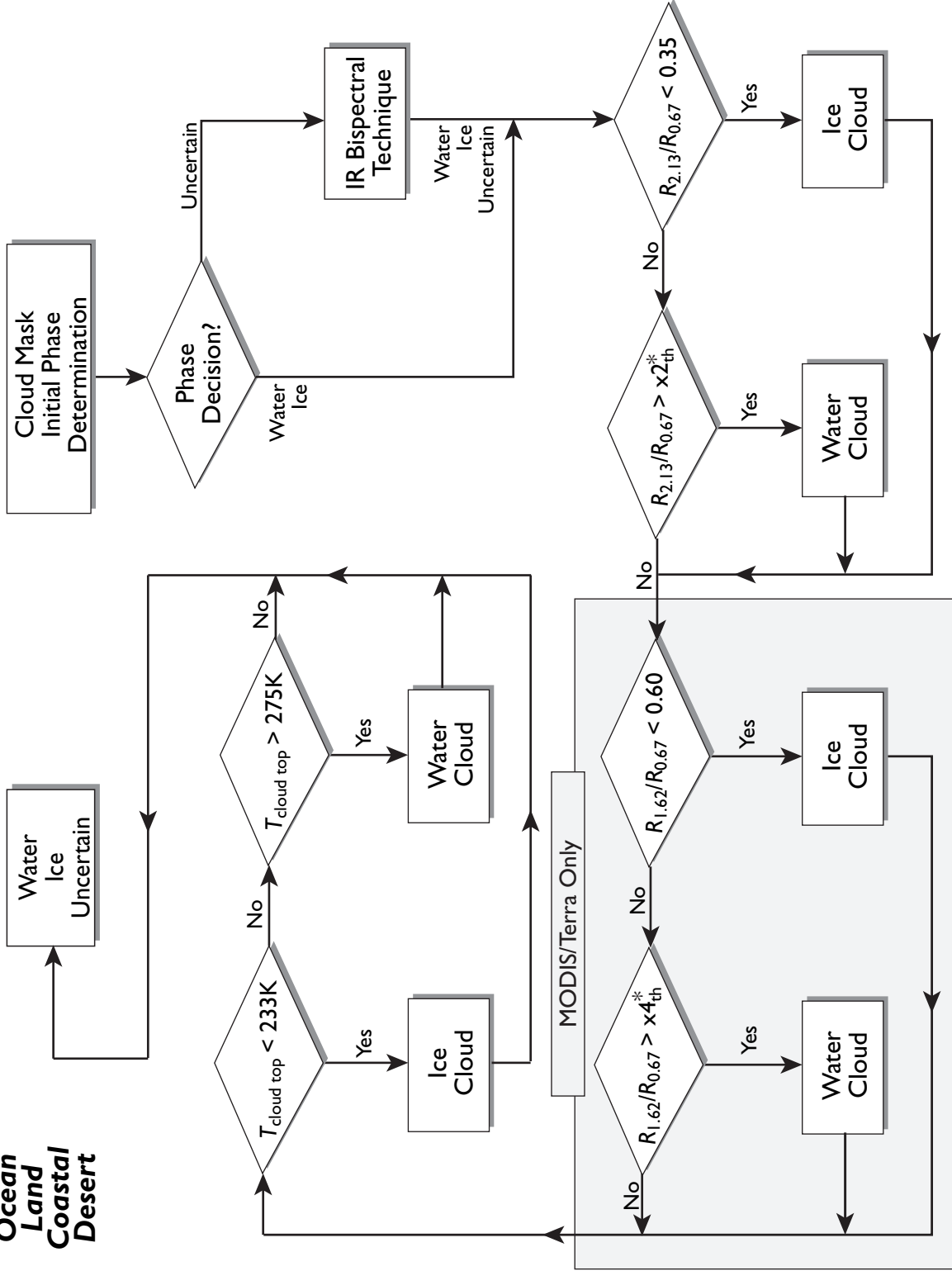


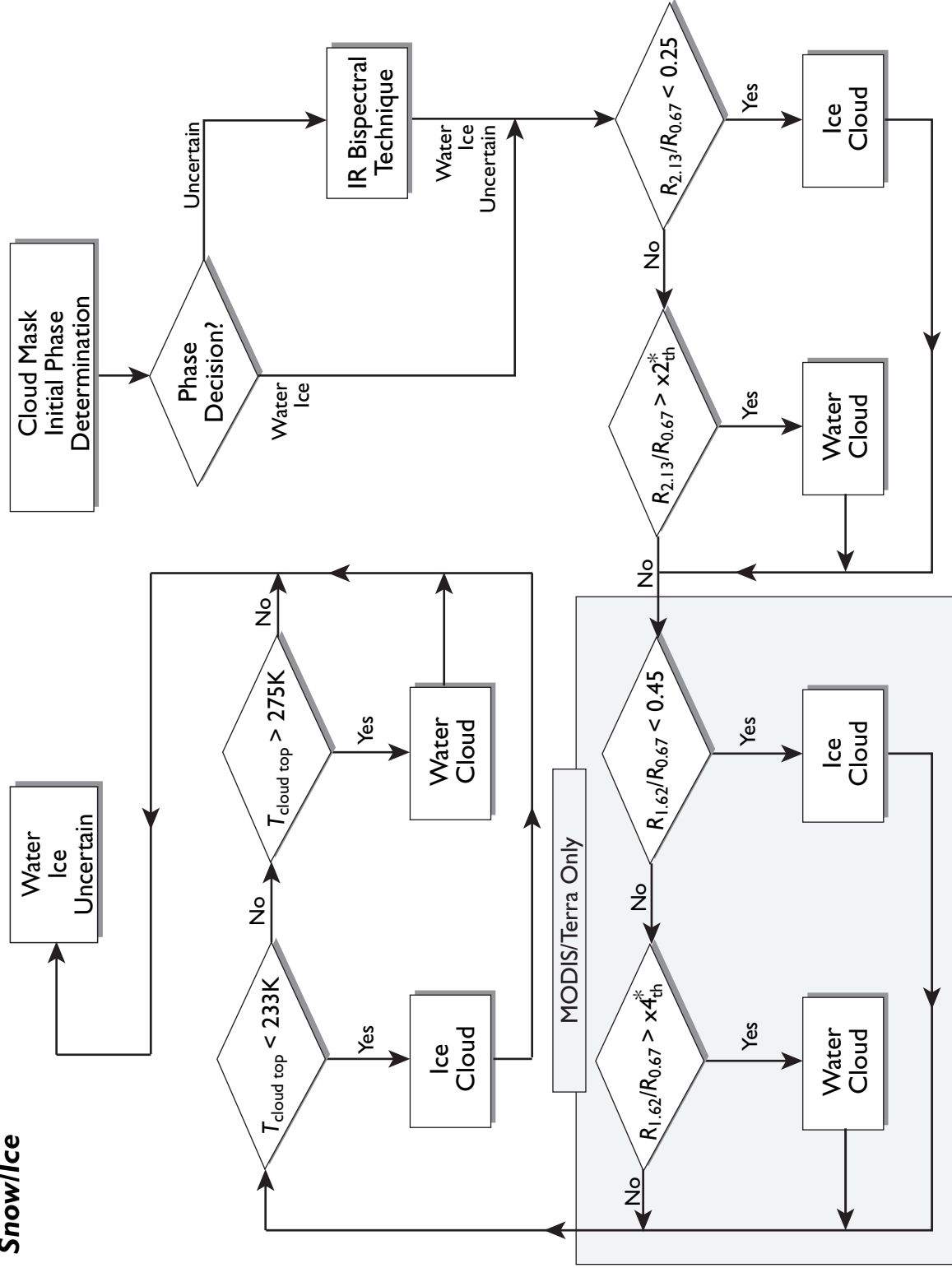
**Ocean
Land
Coastal
Desert**



* SWIR Test Threshold Key

$R_{0.67} < 0.5$	$R_{0.67} \geq 0.5$
$x2_{th} = 0.65$	$x2_{th} = 0.55$
$x4_{th} = 0.90$	$x4_{th} = 0.80$

Snow/Ice



* SWIR Test Threshold Key

$R_{0.67} < 0.5$	$R_{0.67} \geq 0.5$
$x2_{th} = 0.45$	$x2_{th} = 0.55$
$x4_{th} = 0.75$	$x4_{th} = 0.80$